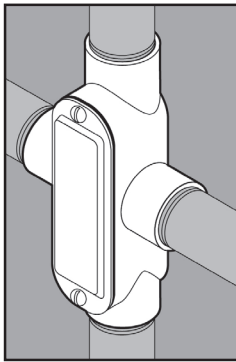
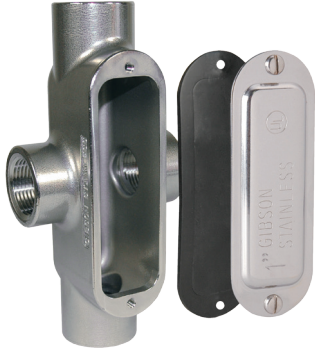
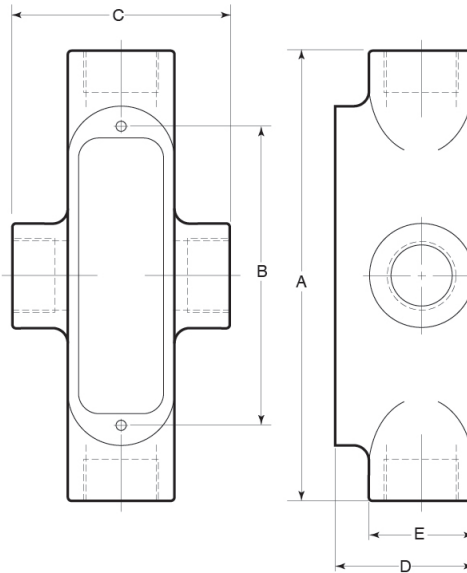


STAINLESS STEEL X CONDUIT BODIES



APPLICATION

- Designed to make 90° bends, change the route of conduit, and/or to make wiring pulls and connections
- Flat back design provides extra wiring capacity
- Form 8
- Offered in seven configurations: C, LB, LL, LR, T, TB, X
- Supplied complete with cover, gasket and Type 316 SS screws
- Manufactured in stainless steel to help prevent corrosion
- Can be installed using ordinary hand tools and require little maintenance or repair
- Provided in a bright, polished finish that does not require touch up or painting



PRODUCT DETAILS

Material:

- Body: CF8M (316 SS)
- Cover, Screws: 316 SS
- Gasket: Neoprene

Standards:

ASTM A351, ASTM A240,
ASTM F593

Country of Origin:

100% Made in USA

Part Number	Conduit Size	Weight/ Each (lbs.)	Dimension (in.)				
			A	B	C	D	E
7075X	¾ in.	3	6.63	4.31	3.40	1.98	1.50
7100X	1 in.	4	7.54	5.00	3.64	2.30	1.75



© 2015 GIBSON STAINLESS & SPECIALTY, INC. - REV 12/2015

PO BOX 847, GREENSBURG, PA 15601
PHONE: 1-800-945-4316 • FAX: 724-838-1544

WEB: GIBSONSTAINLESS.COM